

 CAPITAL CONSULTING

COMPANY PROFILE

## **COMPANY PROFILE**

Capital Consulting is a Cape Verde Islands based diversified investment company with a EUR 5 Billion portfolio under management and business interests spanning from consultancy, brokerage, real estate development and management, private equity, asset management across a wide range of economic sectors in Cape Verde Islands and other international markets.

### **Mission & Values**

We will continue to forge ahead with the same mission, passion and values that formed the bedrock of our business goals. We are committed to upholding our legacy of client service, and we are keenly focusing our efforts on what Capital Consulting does best – providing our clients with comprehensive, timely and cutting-edge solutions and delivering the best possible long-term returns to our clients, shareholders and associated partners.

**Portfolio under management in Cape Verde: EUR 5 Billion**

### **Capital Consulting Corporate Divisions:**

- Real Estate
- Hotels & Resorts
- Aviation, Airports & Ports
- Construction
- Investments
- Asset Management
- Entertainment
- Sports

### **Services we can provide**

Consultancy, Representation, Market Researches, Branding, Brokerage, Design & Master Planning, Project Management, Project Marketing, Construction Management, Asset Management, among others.

### **Investments we have**

- :: **Master Solutions** – Real Estate Project Marketing
- :: **Urban Design** – Urban Planning, Architectural, Interior Design
- :: **Encoma** – Engineering
- :: **G Design Studio** – Graphic Design & Branding
- :: **Nani Sport Bar & Lounge** – Sports & Entertainment
- :: **Ultimate Luxury** – Broker for the Luxury sector

### **Assisting Investors**

Capital Consulting can assist any investor from any market because we have the know how and experience to deal with large investments, and we have the right partners local and internationally to help put any investor's business plan into action. Language is not an issue. Our staff speaks English, Portuguese, German, French, Italian, and Arabic.

Our excellent relationship with the Government and our outstanding track record allows us to cut red tapes that might end up coming on the way of the investors plan.

## SOME PROJECTS WE HAVE PROJECT MANAGE IN CAPE VERDE

### CESARIA RESORT

**Location:** S.Vicente Island, Cape Verde

**Area:** 1.400 Hectares (14.000.000 sqm)

**Services:** Consultancy, Project Design Management, Investor Representation, Contracts negotiations, Survey Supervision, Urban Planning regulations, Branding Consultancy, Market researches, etc.



## PUNTA DO MORRO RESORT

**Location:** Maio Island, Cape Verde

**Area:** 60.000 sqm

**Services:** Consultancy, Project Design Management, Investor Representation, Contracts negotiations, Survey Supervision, Urban Planning regulations, Branding Consultancy, Market researches, etc.



## FOGO ISLAND - SÃO FILIPE AIRPORT

**Location:** Fogo Island, Cape Verde

**Runway length:** 1.200 m

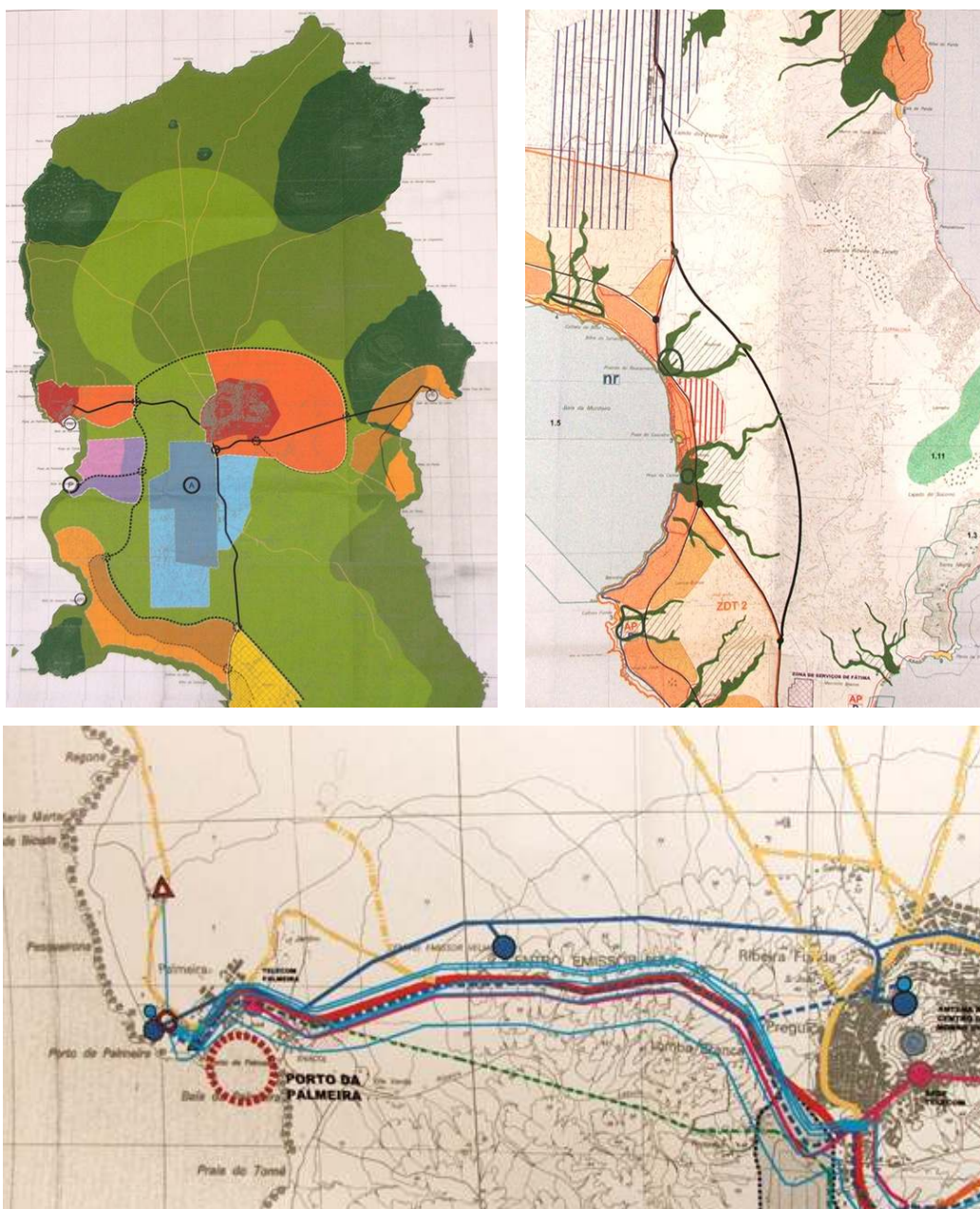
**Services:** Engineering works supervision of the runway and terminal upgrade.



**PDM – SAL ISLAND (Island Master Plan)**

**Location:** Sal Island, Cape Verde

**Services:** Sector strategic analysis and Technical consulting services for territory planning.



OUR GROUP OF COMPANIES



**Master Solutions:** Real Estate Project Marketing



**Urban Design:** Urban Planning, Architectural, Interior Design



**Encoma:** Engineering



**G Design Studio:** Graphic Design & Branding



**Nani Sport Bar & Lounge:** Sports & Entertainment



**Ultimate Luxury:** Broker for the Luxury sector